

PSYCHO EMOTIONAL LOADING DETERMINATION SYSTEM FOR OPERATORS

LOMIDZE AVTANDIL

ELECTRICAL AND COMPUTER ENGINEERING

2ND YEAR STUDENT

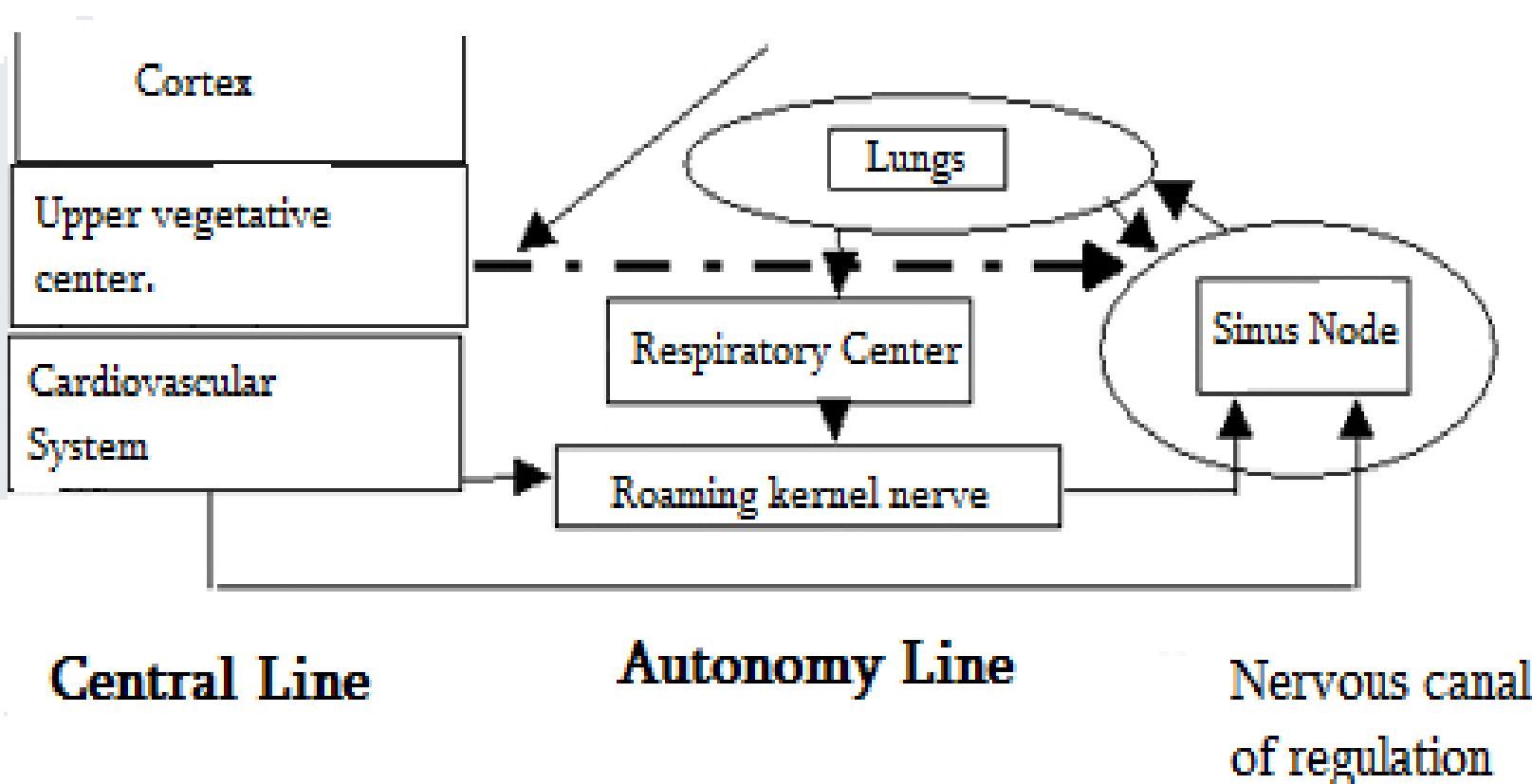


WHAT IS STRESS INDEX?

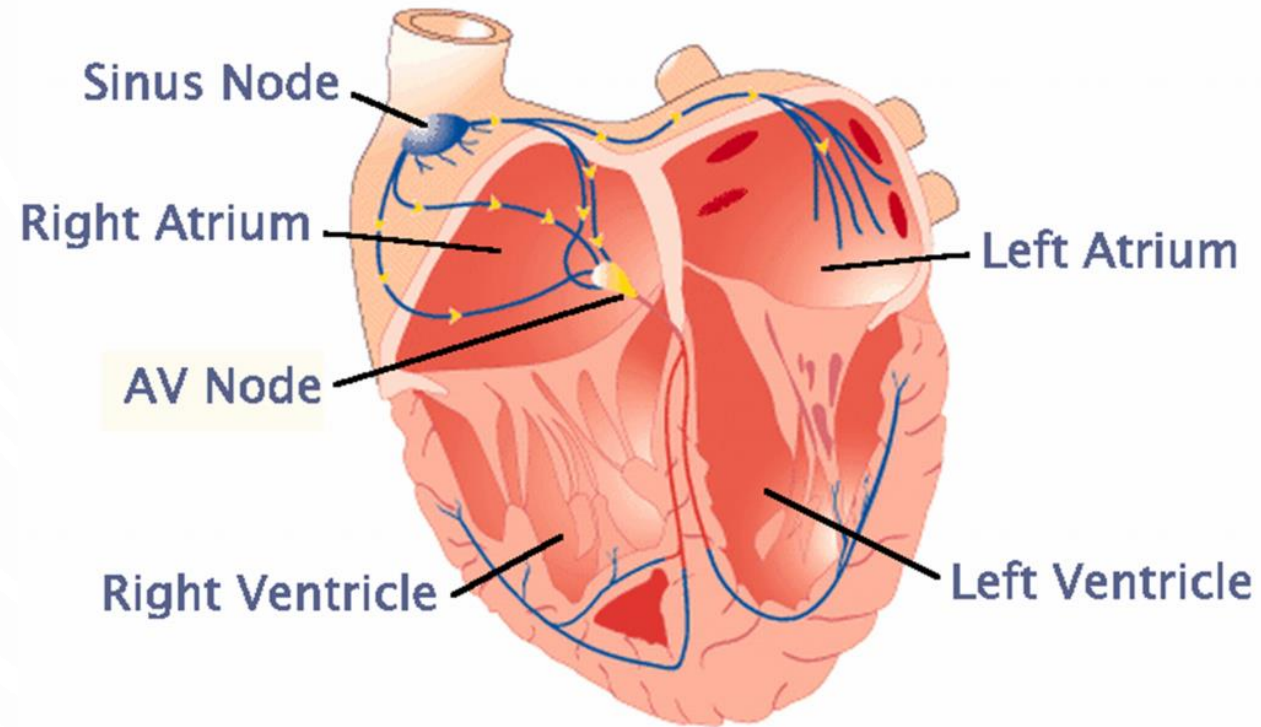
WHY STRESS INDEX IS IMPORTANT?

N	INDEX	Adaptation state	Health characterizing
1	1.50-2.59	Satisfying	Healthy
2	2.6-3.09	Tensed	Low quality health
3	3.1-3.59	Unsatisfying	Needs additional medical examination
4	3.6 or more	Failed adaptation ability	Needs medical treatment

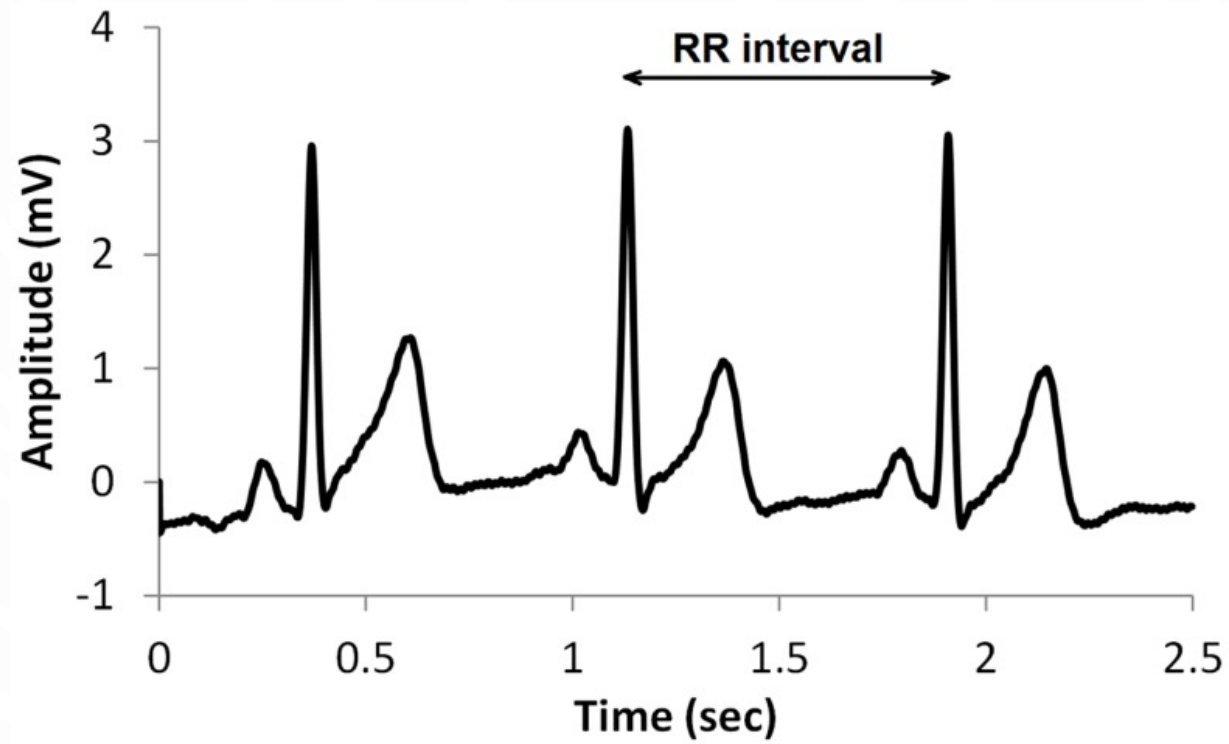
DIAGRAM OF TWO LOOP MODEL OF HEART RATE REGULATION



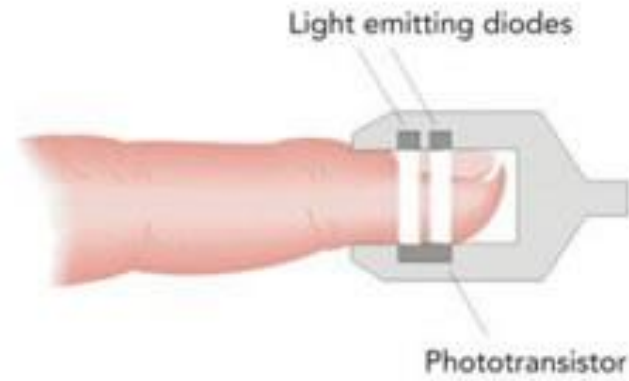
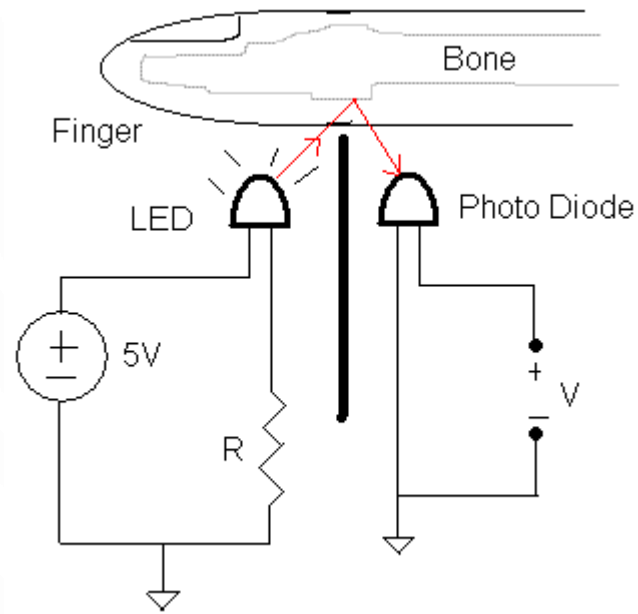
WHAT IS THE FUNCTION OF SINUS NODE?



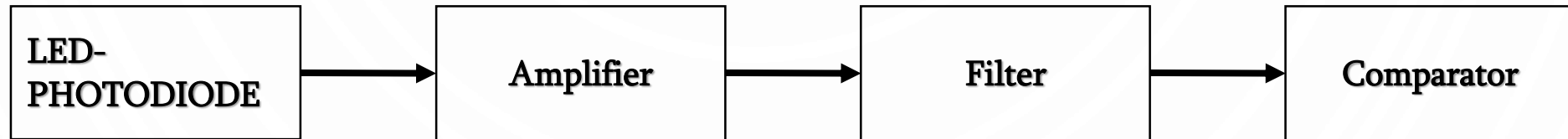
R-R INTERVAL



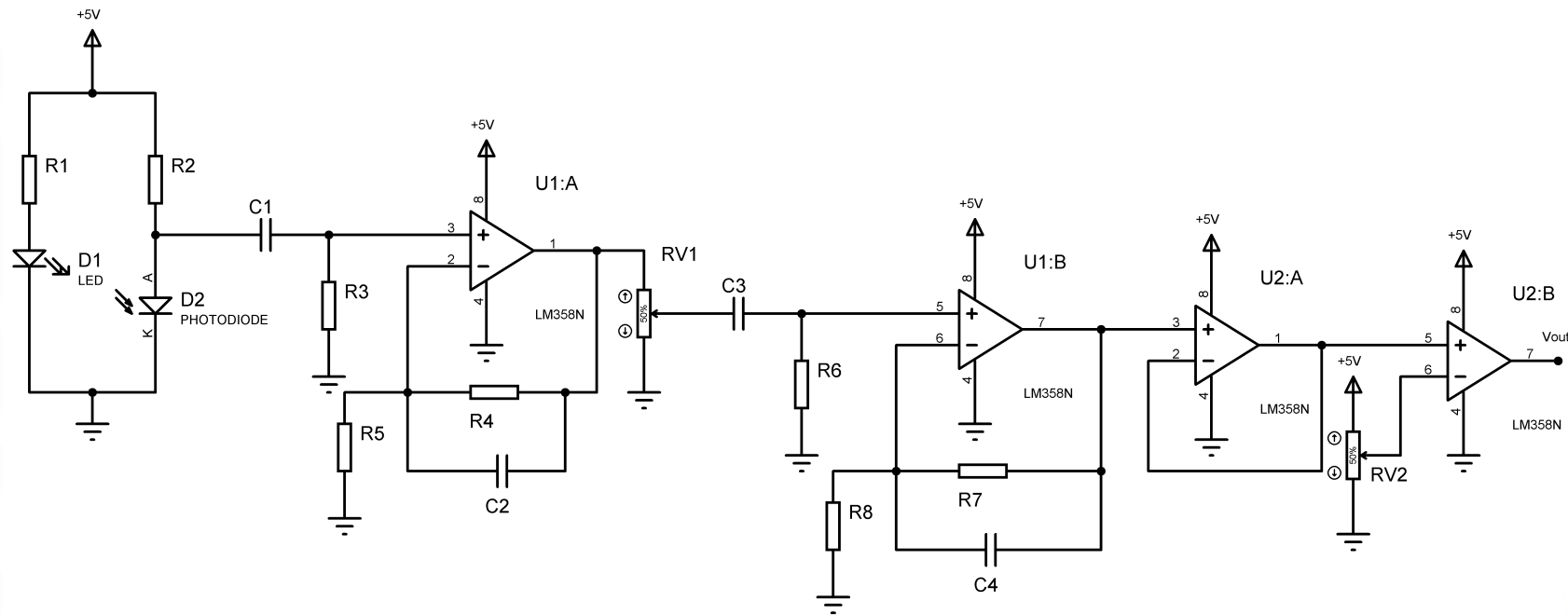
HOW TO GET PULSOGRAPH?



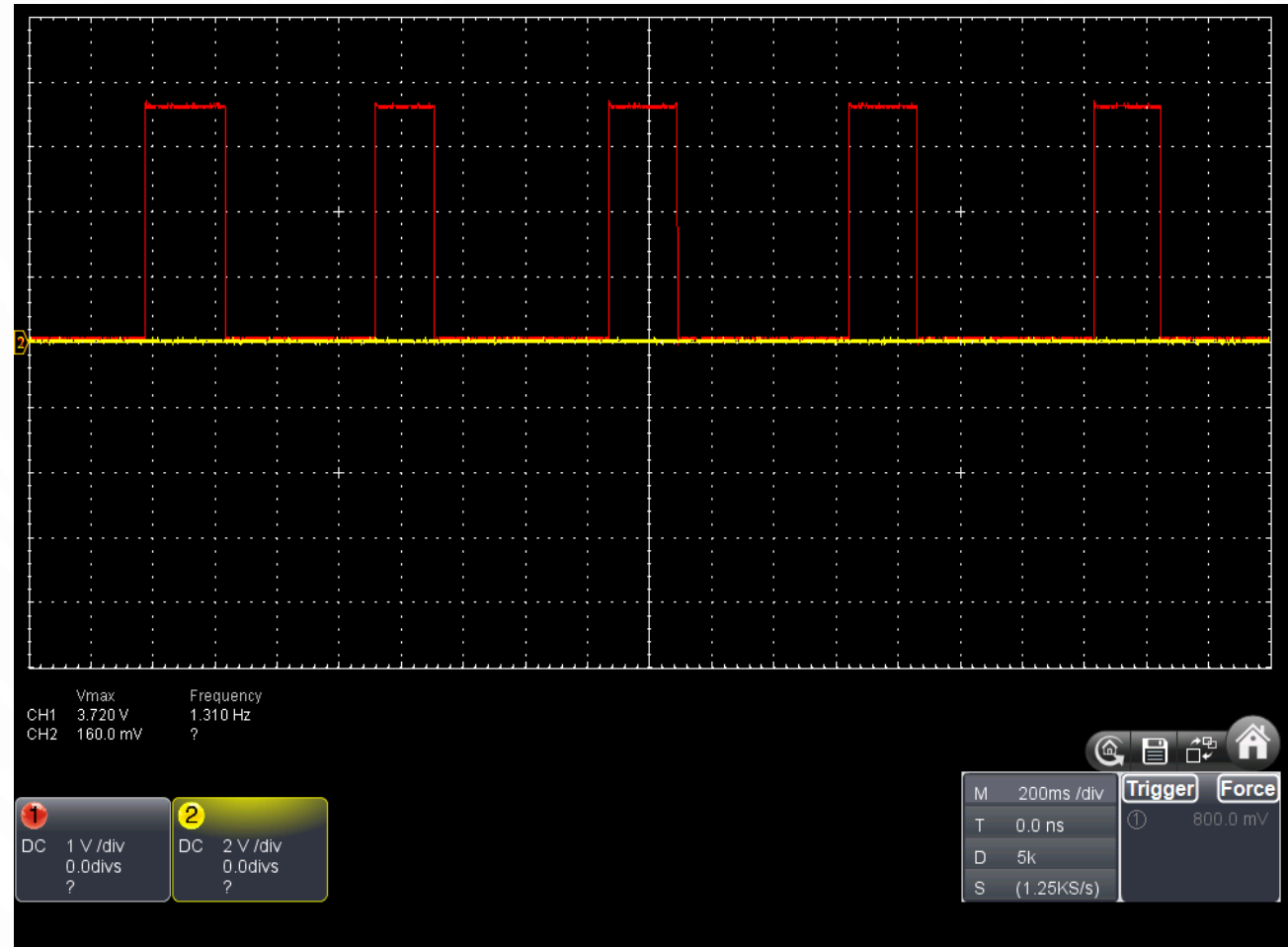
BLOCK DIAGRAM OF PULSE SENSOR CIRCUIT



CIRCUIT OF PULSE SENSOR



PULSE SENSOR OUTPUT



FUTURE PLANS

- Pass signal from detector to microcontroller or computer
- Measure stress INDEX
- Measure adaptation ability
- Indicate pulse graph and information



BIBLIOGRAPHY

- A. Dosinas, M. Vaitkunas J. Daunoras Measurement of Human Physiological Parameters in the Systems of Active Clothing and Wearable Technologies ELECTRONICS AND ELECTRICAL ENGINEERING 2006. Nr. 7(71)
- <https://www.youtube.com/channel/UCgpQgWLXEZWSplxs1eB9Gvw> Biomedical Electronics lectures and projects, Cornell University ECE.
- <http://www.vestar.ru/article.jsp?id=1267> ANALYSIS OF VARIABILITY OF HEART RHYTHM USING VARIOUS ELECTROCARDIOGRAPHIC SYSTEMS.
- Lab methods in “Medical-Biology information processing systems”, Georgian technical university.
- <https://www.medicinenet.com/script/main/art.asp?articlekey=8448> Medical definitions.



THANK YOU FOR YOUR ATTENTION!

