

TANDEM@Caucasus

Tbilisi Accelerator based Nuclear, Dating and
Environmental Monitoring
Regional center



R. Shanidze
University of Erlangen
and
HEPI TSU





Outline:

- Motivation
- **AMS** facility for **TANDEM**
- Research with **TANDEM**
- Current status and milestones



Motivation:


- Modern experimental tools for scientific research and high education.
- Reasonable installation/running costs.
- Possibility to serve large scientific community in Georgia and South Caucasus region.
- Close collaboration with research groups in EU (USA, Japan,..)

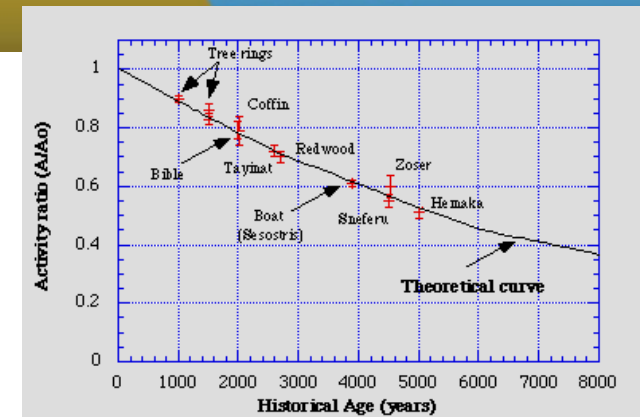
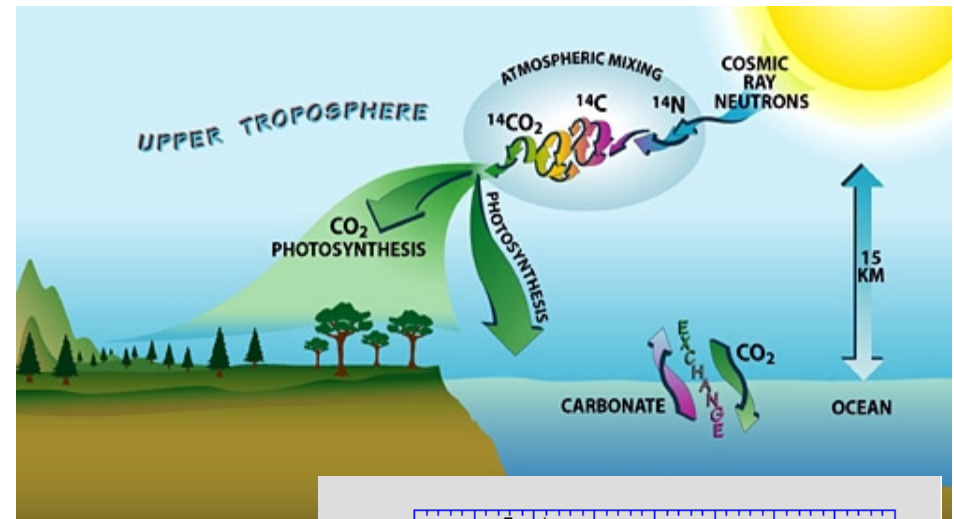


The AMS facility for TANDEM

- The Accelerator Mass Spectrometry (AMS):
Ultrasensitive analysis tool for:
- Archeology
- Biology, medicine and pharmacology
- Chemistry
- Environmental studies,
- Physics, . . .

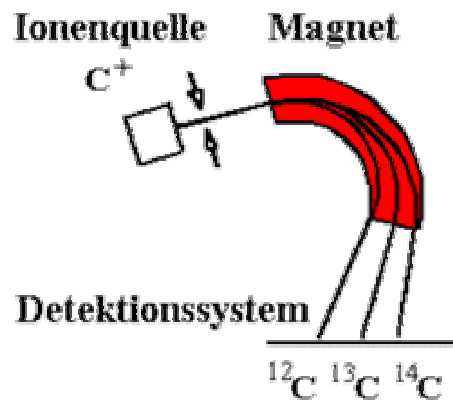
Example: Radiocarbon (^{14}C)

- W.F. Libby ( , 1960)
- Cosmogenic origin:
 $^{12}\text{C}:^{14}\text{C}=1:10^{-12}$
 $T_{1/2}=5730 \text{ y}$
- Applications: Archeology, Environmental studies, ...
- **Tbilisi State University:**
Radiocarbon Laboratory
 from 1964



Conventional Mass Spectrometry

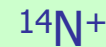
„Conventional“: particle energy $\leq 80\text{keV}$, positive ions are deflected by a magnet differently according to their mass (to charge ratio)



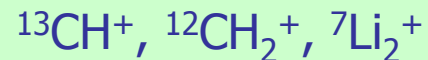
Concentration of isotopes of interest (e.g. ^{14}C : 10^{-12} - 10^{-15}) is lower by many orders of magnitude than the background!

Background ions of **mass-14** (^{14}C detection)

Isobares:

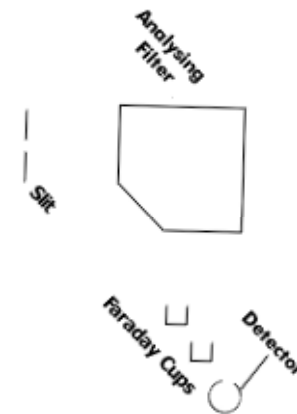
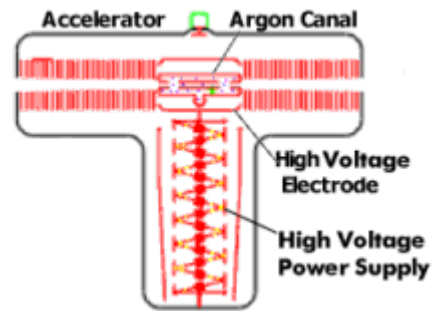
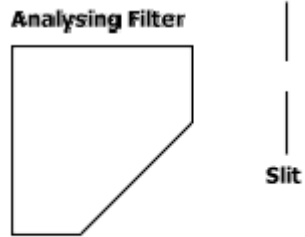
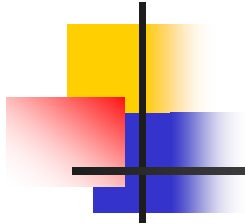


Molecules:



Mass resolution for spectrometers with reasonable acceptance not sufficient to detect rare isotopes like ^{14}C due to the huge background

Accelerator Mass Spectrometry



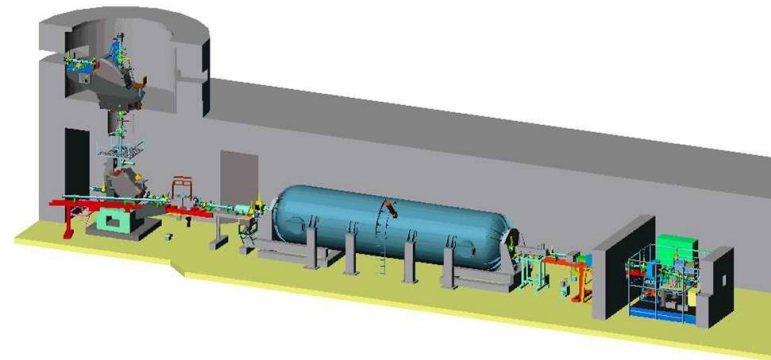
Map of AMS in Europe

- Worldwide: ~ 50 **AMS**
- Europe: ~ 20
- USA, Japan ~ 10 each
- Argentina, Australia, Brazil, China, India, Israel, New Zealand, South Korea



The Erlangen EN-Tandem facility

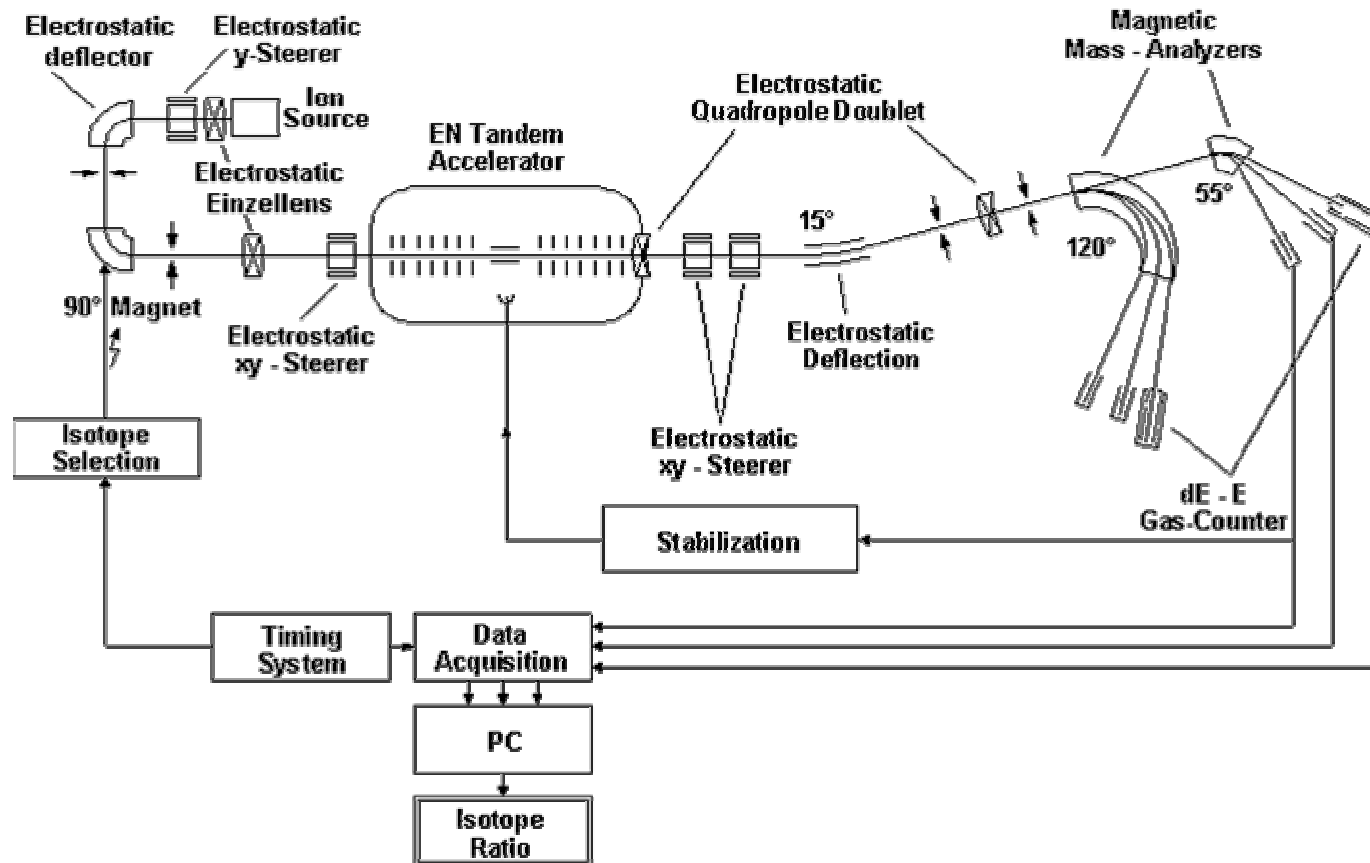
Erlangen Tandem accelerator



- Operational since 1967
- Initial research area: - *Nuclear physics* (spectroscopy, polarization, heavy ion reactions)
- Now exclusively - *Applied physics* and detector tests

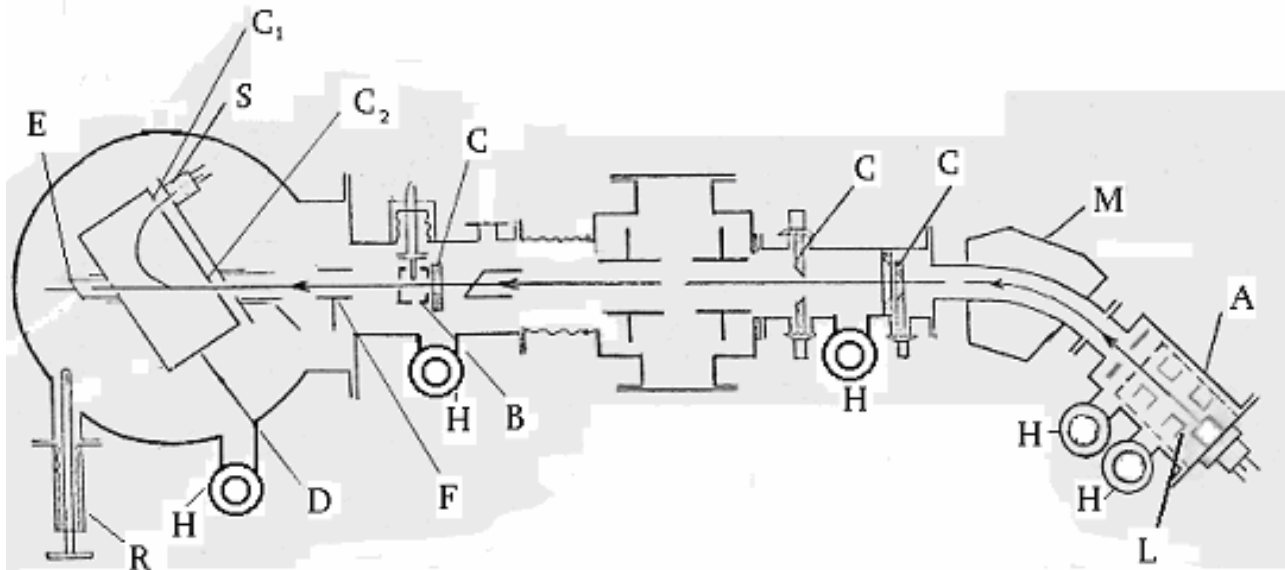
- Two ion sources, one exclusively for AMS
- Belt charging system, insulation gas $N_2 + CO_2$ at 14bar : $U_{max} = 5.5MV$
- Tandem and AMS detector in the basement
- Beamlines at ground level, fed by the upper turnable 90° magnet

Schematic view of Erlangen AMS



Ion-atomic scattering

Laboratory of Atomic and molecular processes
Nuclear Physics Division of Physics Department, TSU

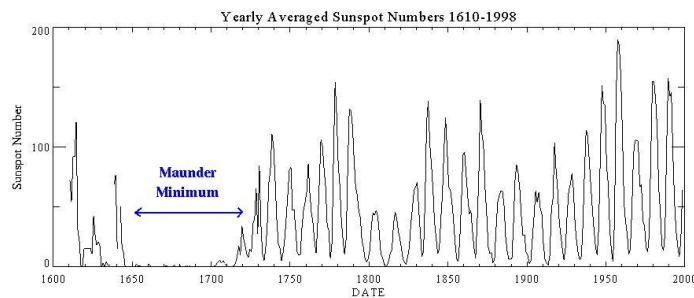


M.Gochitashvili et. Al.,
NIM, B205(2003),494

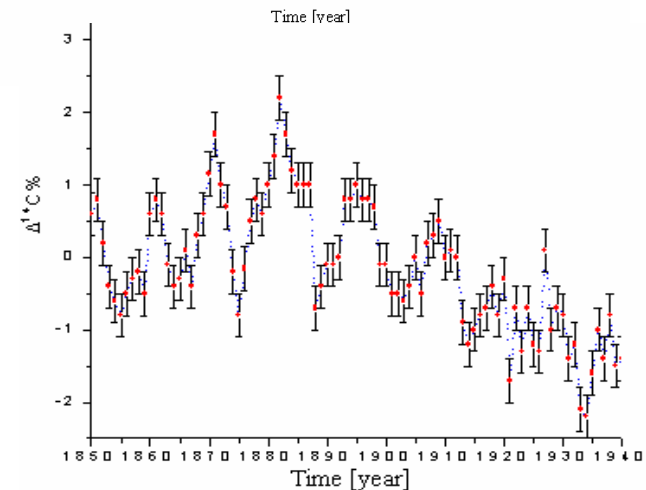
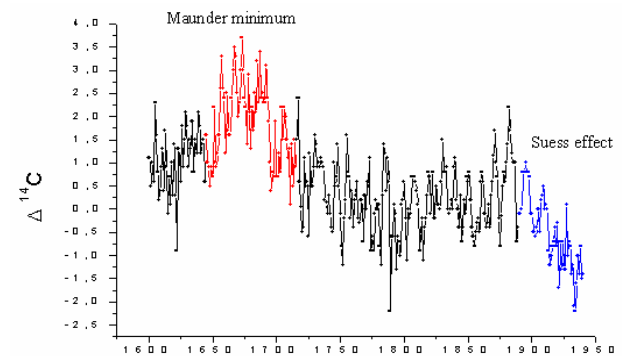
Experimental setup: A- ion source, L- accelerating and focusing system ,M magnetic mass-analyzer
C- collimating slits, B- collision chamber , H- differential pamping system,B-collision chamber,
D-electrostatic analyzer, S- secondary electron multiplier. R-analizator rotating system
E-ion detector ,F-capacitor

^{14}C and the Maunder Minimum

- The Maunder minimum:
'Little Ice Age' ~ 1645-1715



- Astrophysics, Climate and Environment studies, ... (Stradivary violins)
- G.E. Kocharov, P.Kereselidze, Z.Lomtadze, R. Metskvarishvili, Z. Tagauri, S. Tsereteli – Variation of Radiocarbon Content in Tree Rings During the Maunder Minimum of Solar Activity. *Radiocarbon*, 34(1992),213.



TANDEM: First steps

Kvali forum, 9-12/7/2004, Tbilisi, Georgia
 Presentations from E.Steffens, R.Shanidze,



E.Steffens and L.Kurdadze
 after meeting at IPAS,
 12/07/04

Meeting at Institute of Physics (GAS),
 Expression of Interest, 12/07/2004



**Germans will help with new Scientific Center
 Kviras (weekly), 22-29/08/04.**



TANDEM Proposal

(Preliminary list of interested scientists)

J.Amiranashvili

Center of Archeological Study

M.Gochitashvili, T.Kereselidze, L.Kurdadze, R.Lomsadze, S.Pagava, G.Sakhelashvili

Physics Department, Tbilisi State University

L.Abesalashvili, B.Chiladze, T.Djobava, M.Nioradze, N.Lomidze, R.Shanidze,
M.Tabidze, Y.Tevzadze

High Energy Physics Institute, Tbilisi State University

D.Virsaladze

Tbilisi Medical University

J.Chikvaidze

Institute of Botany, Georgian Academy of Sciences

V.Bregadze, L.Chikovani, D.Khachidze, A.Naskidashvili, D.Tananashvili

Institute of Physics, Georgian Academy of Sciences

Possible site



HEPI TSU:
Space for TANDEM
accelerator,
Internet center for
research and education.

IPAS: main building in
Tbilisi and former
research nuclear reactor
centre near Mtskheta.



Milestones for **TANDEM**:

in collaboration with Erlangen University:

- **TANDEM** Proposal (end of **2004**)
- Project Evaluation (I half of 2005)
- Submission for funding (II half 2005)
- AMS installation (end 2006)
- **TANDEM** starts : **2007**

Caucasus:

Caucasus



Բոլոր մարդիկ ծնվում են ազատ ու հավասար իրենց արժանապատկություններով ու իրավունքներով: Նրանք ունեն քանակականություն ու խօսի՝ միմյանց պետք է եղբայրաբար վերաբերվեն:

1 2
 Շ Է
 Չ Կ
 Լ Յ
 Ղ Յ
 Օ Ծ
 Դ Կ
 Է Կ
 Ը Ե
 Ի Բ
 Չ Ե
 Դ Կ
 Ե Կ
 Ը Ե
 Ի Բ
 Չ Ե
 Դ Կ
 Ե Կ
 Ը Ե
 1. Asc
 3. M